



## Business Management of Buses

GEA is a **web platform** that allows to manage the demands of bus companies. In the same application the most important points of the management of a bus company are gathered, depending on the characteristics of the company.

### How does it work?

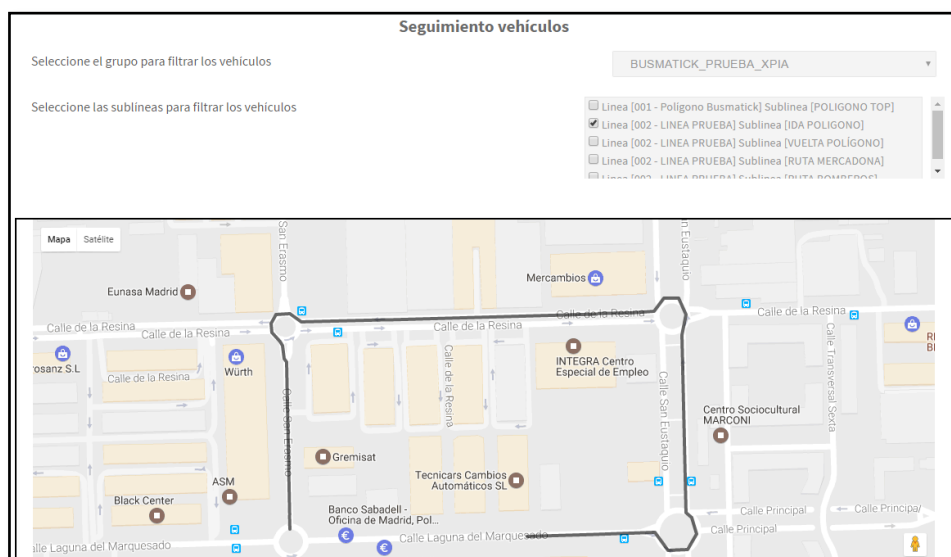
The first thing to do when we access the **web platform** is to enter in our browser the following address: [www.gea.busmatick.com](http://www.gea.busmatick.com). Then we must enter our user and our password in the identifier. These will be given by the system itself and can be changed at any time.

### The platform has different functions:

1. **Follow-up:** from where we can find the complete monitoring of the company's fleet. For tracking to be enabled, the server on which it is hosted must have a dedicated BtkMonitor started.



2. **Vehicle tracking:** in this section you can select the vehicles of a company and see the lines associated with those vehicles, as well as their route to follow up.



3. **Line tracking:** in this section we can select different line tracking profiles that must have been previously configured.

4. **Reports:** from the platform, reports are provided for the management and control of your fleet, such as: report of collection, movement of cards, hours of passage, distance traveled, dump bar counters, services performed etc...

Código de vehículo	Fecha/hora conteo	Identificador zona control	Subidas	Intento subidas	Bloqueos
77	2016-08-22	N/A	-417	-177	-90
77	2016-08-18	N/A	0	-177	-14
77	2016-08-17	N/A	0	-177	-14
77	2016-08-16	N/A	3	-177	-14
77	2016-08-05	N/A	-530	-180	-90

5. **Management:** this functionality can control the designs and transport services, as well as data management refers to vehicles, drivers, events and resource files.
6. **Administration:** in this section we will be able to organize the type of users that will manage the web platform and the permissions that each user has.